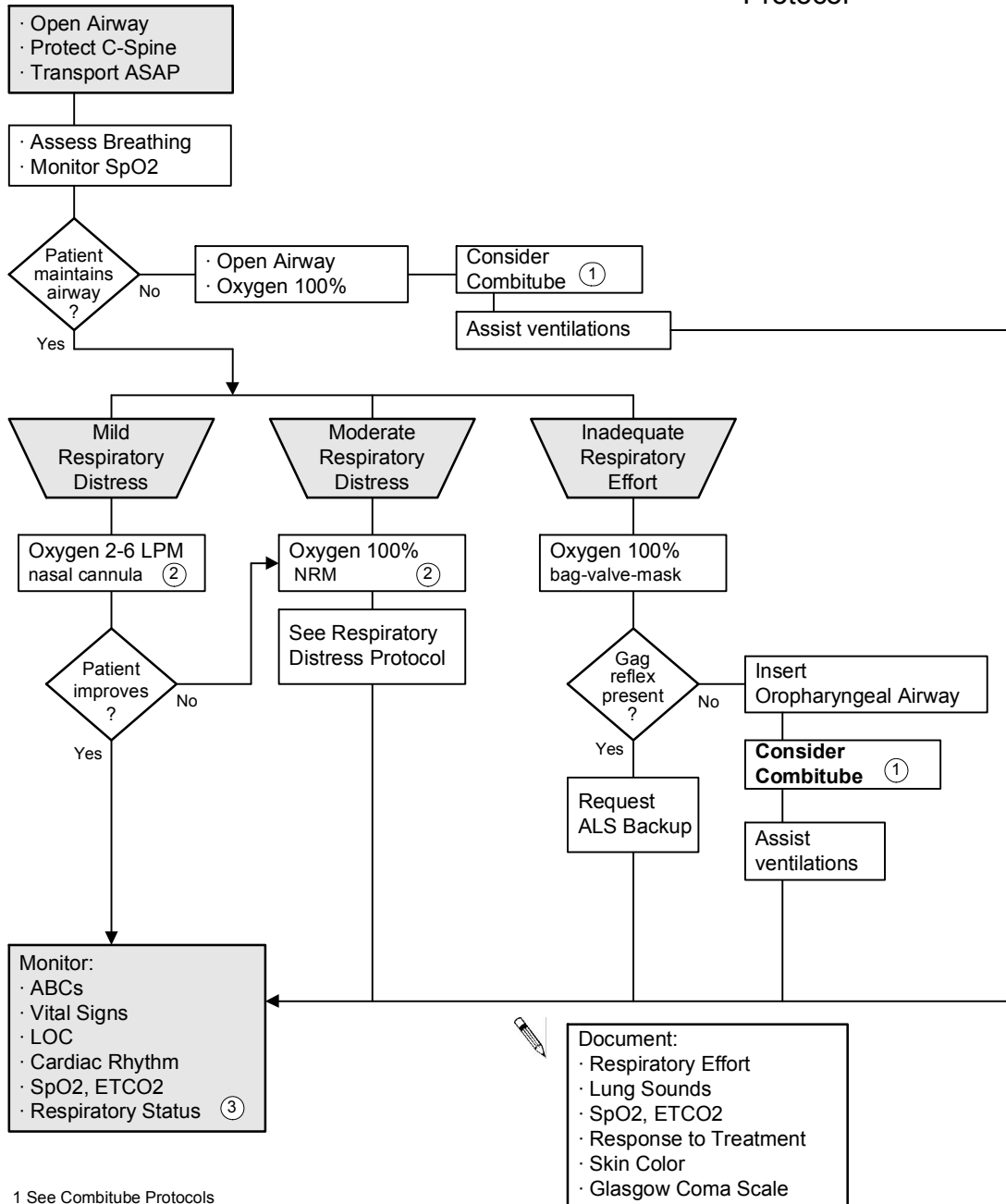


Airway Management

ILS
Protocol



1 See Combitube Protocols

2 COPD patients often use their Hypoxic Drive. In these cases, expect and accept SpO2 readings <90% & >85%. Lower concentrations of oxygen may be indicated, yet never deprive a patient in respiratory distress of Oxygen.

3 IF RESPIRATORY EFFORT OR LEVEL OF DISTRESS CHANGES MOVE TO THE APPROPRIATE ASPECT OR ARM OF THIS PROTOCOL.

ECEMS, Effective 1/2008

Copyright 2001-2008 East Cascade Emergency Medical Services

AIRWAY MANAGEMENT