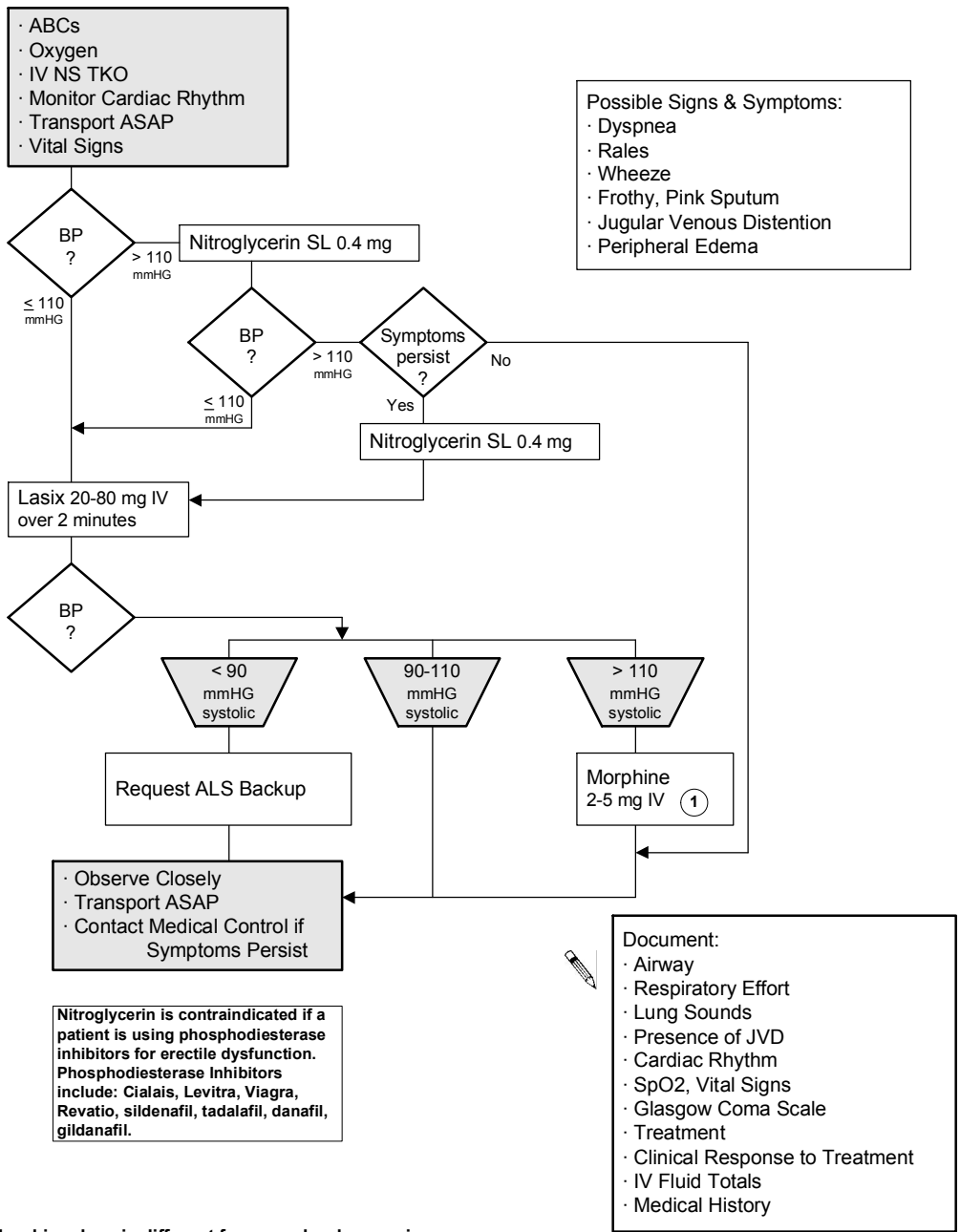


**Congestive Heart Failure  
Pulmonary Edema: Acute**

**ILS  
Protocol**



**1. NOTE: Morphine dose is different from regular dose regime.**

ECEMS, Effective 1/2008  
Copyright 2001-2008 East Cascade Emergency Medical Services

CONGESTIVE HEART FAILURE  
PULMONARY EDEMA: ACUTE