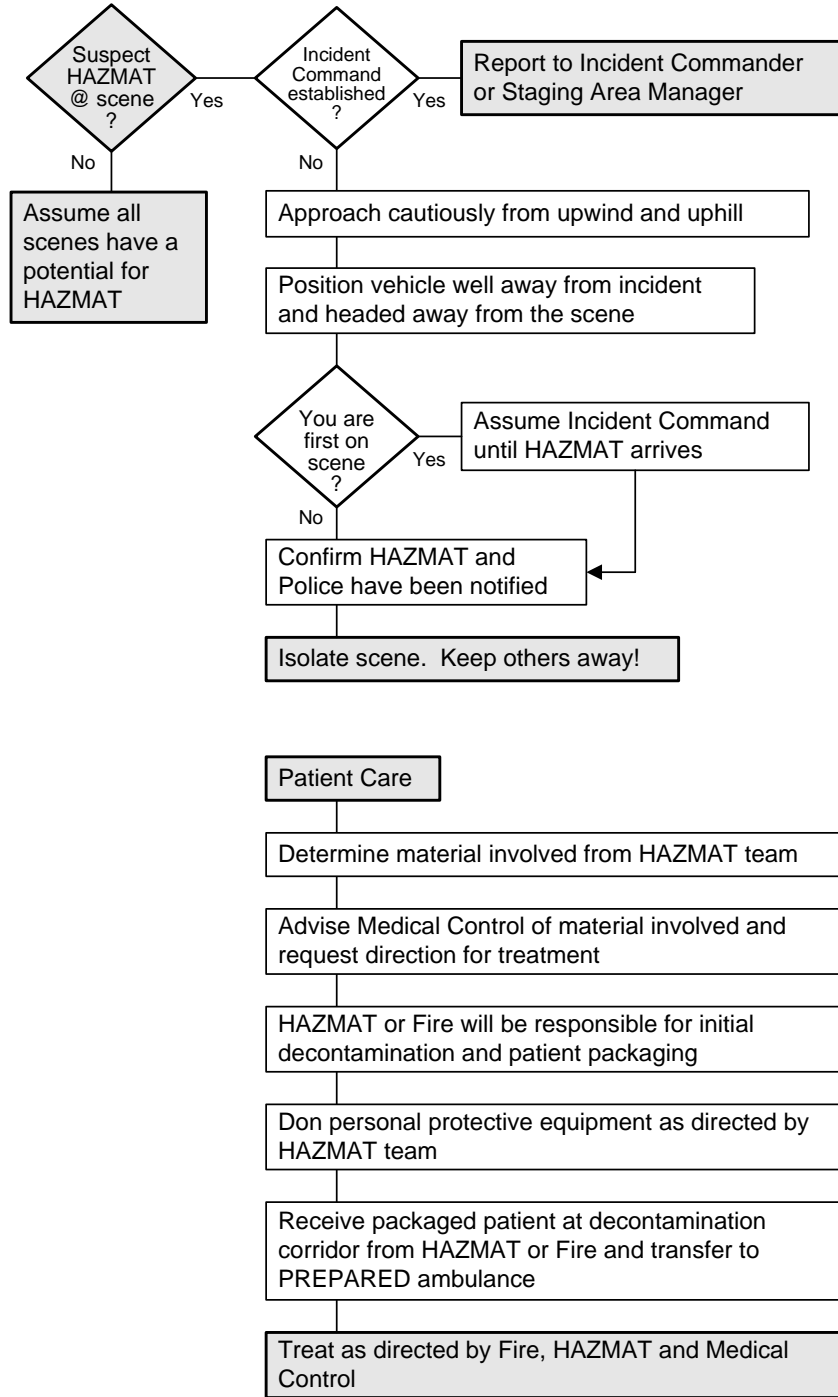


HAZMAT
For Non-HAZMAT personnel



See page 2 of 2

Ambulance Preparation

Prepare ambulance as directed by HAZMAT or Fire

Remove all non-essential supplies/equipment

Drape interior and floor of vehicle with plastic as directed

Transport

Notify receiving facility: provide relevant information and ask where they would like you to park

Do NOT enter the ER without specific direction from the ER staff

After transferring the patient to ER staff, return to the ambulance and remain inside. Do not move the vehicle or allow others inside.

Contact Incident Commander to determine how and where the vehicle should be decontaminated.

EMS Personnel Exposure

If exposed at scene: remove yourself from further contamination and report incident to Safety Officer or HAZMAT and wait for direction.

If exposed enroute to the hospital: inform ER and await direction.

After decontamination and treatment, receive clearance from HAZMAT Group Supervisor or ER MD AND your supervisor before returning to duty.



- Document:
- Patient care
 - Response to treatment
 - Hazardous Material
 - Communication with ER, Medical Control, HAZMAT
 - Measures taken to limit exposure
 - Decontamination

