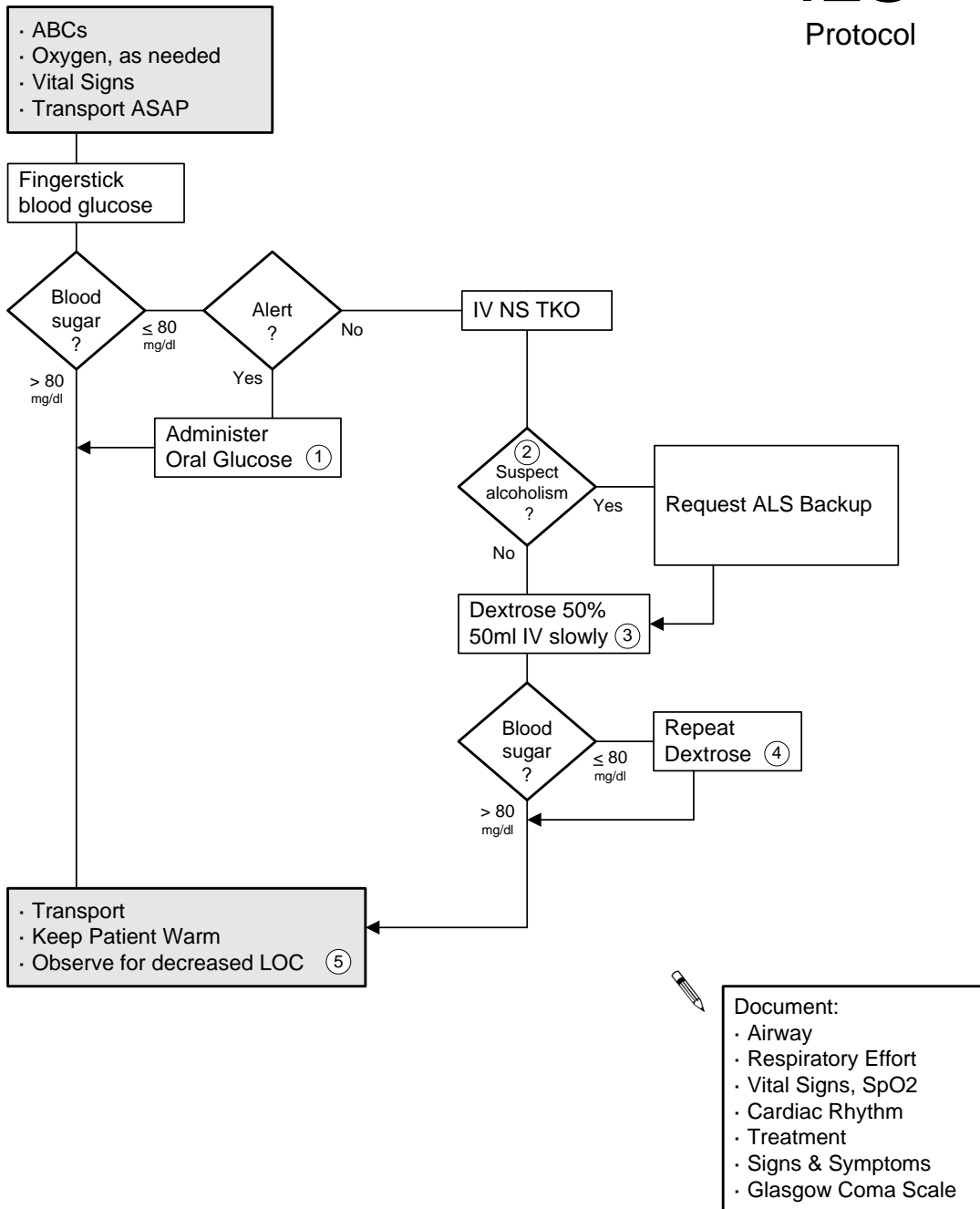


Hypoglycemia



- 1 Full glass of sweetened juice or Glucose Oral Paste 12.5g PO. Must have an intact gag reflex.
- 2 Thiamine is indicated in acute alcoholism, malnutrition, and in chemotherapy therapy.
- 3 Dextrose pediatric dose is 0.25 - 5 gm/kg IV (use 25% solution)
- 4 If unable to gain IV access consider Glucagon 1 mg IM.
- 5 Observe for decreased LOC, focal neurological findings, and hypothermia.