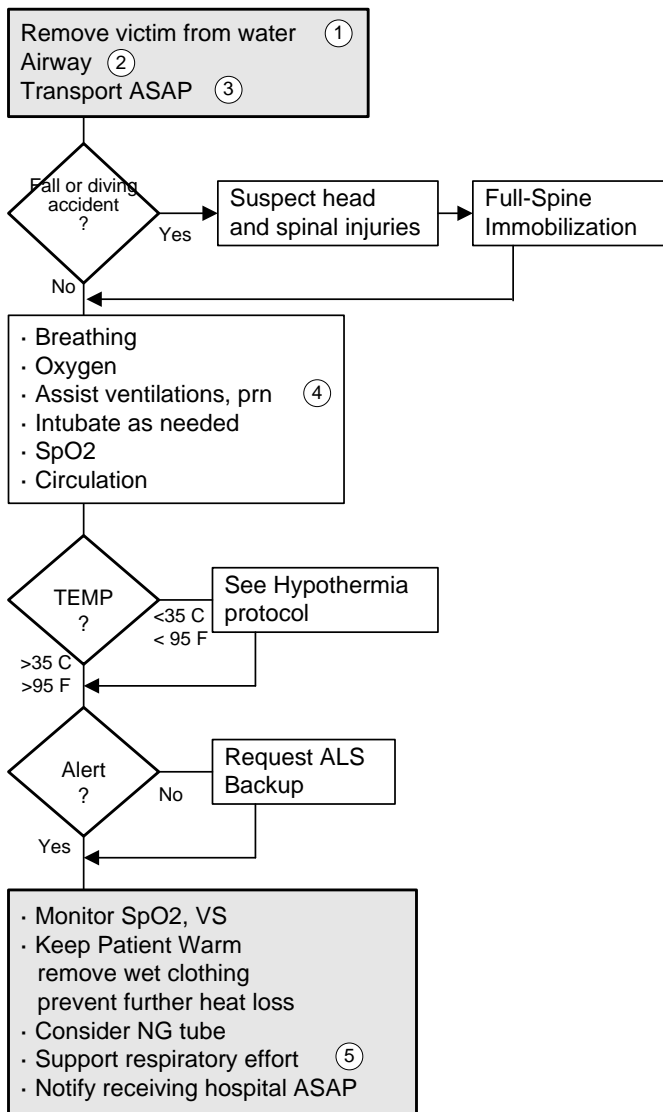


Drowning

BLS Protocol



- Document:
- Medications
 - Onset & Duration of LOC
 - Recent or Chronic Illness
 - Trauma
 - Seizure Activity
 - Activity Prior to LOC
 - Pregnancy
 - Glasgow Coma Scale
 - SpO2
 - Capillary Refill
 - Cardiac Rhythm
 - Vital Signs

1 To be performed by a trained rescuer with appropriate equipment.
 2 Ventilation should be initiated while the patient is being rescued.
 3 All near-drowning victims should be examined by a physician.
 4 Use PEEP if available.
 5 Observe for Pulmonary Edema.

ECEMS, Effective 1/2008