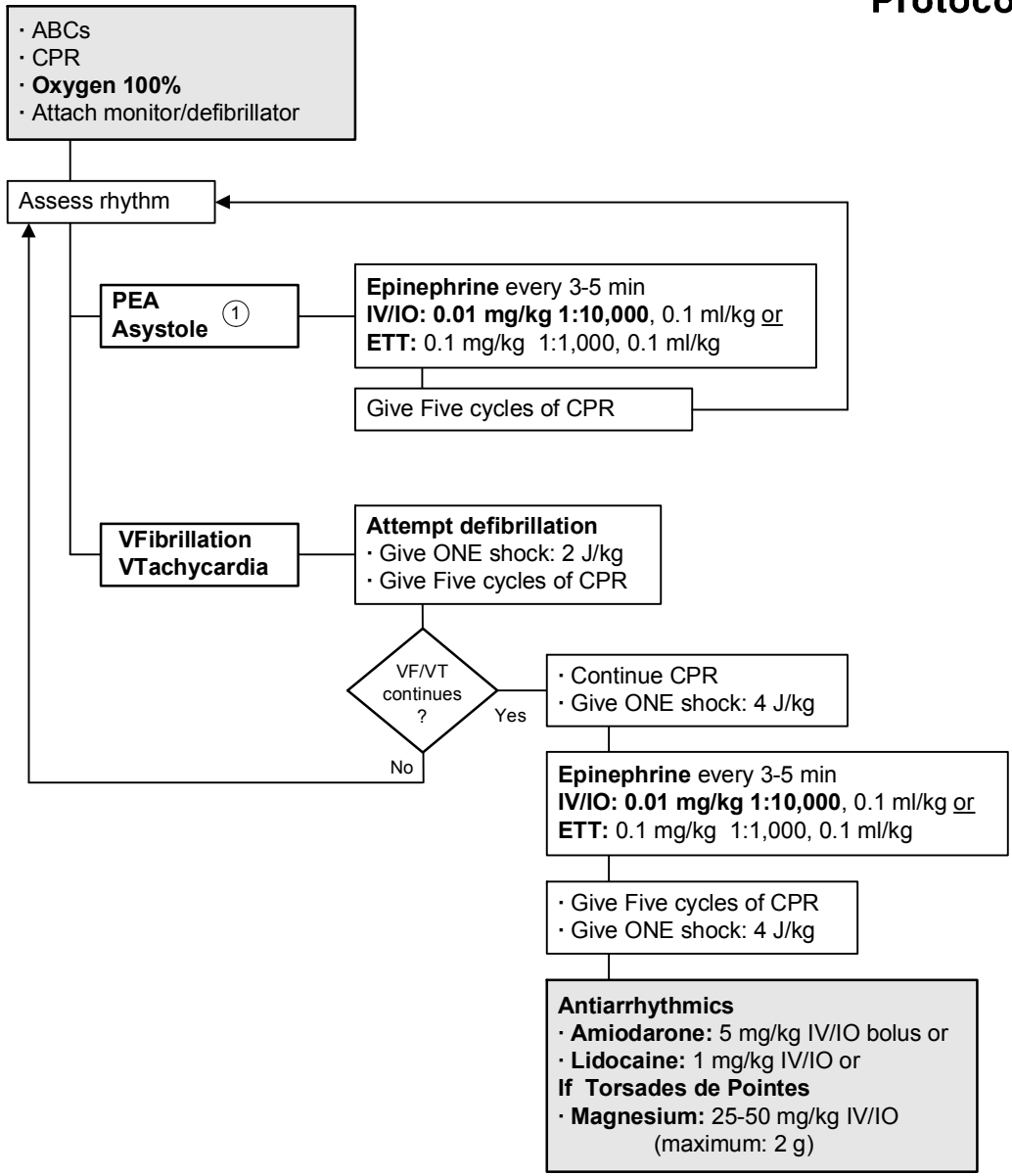


Pulseless Arrest
Pediatric Advanced Life Support

ALS Protocol



CPR

- **When intubation complete:** rescuers no longer deliver “cycles” of CPR. Give continuous chest compressions without pauses for breaths. Give 8-10 breaths/minute. Check rhythm every 2 minutes.
- **Compressions:** 100/min, ensure full chest recoil, minimize interruptions.
- **One cycle = 30 compressions then 2 breaths.**
- **Do not interrupt CPR when giving medications.**

1 Search for causes: hypovolemia, hypoxia, acidosis, hypokalemia, hypoglycemia, hypothermia, toxins, cardiac tamponade, tension pneumothorax, PE, trauma.