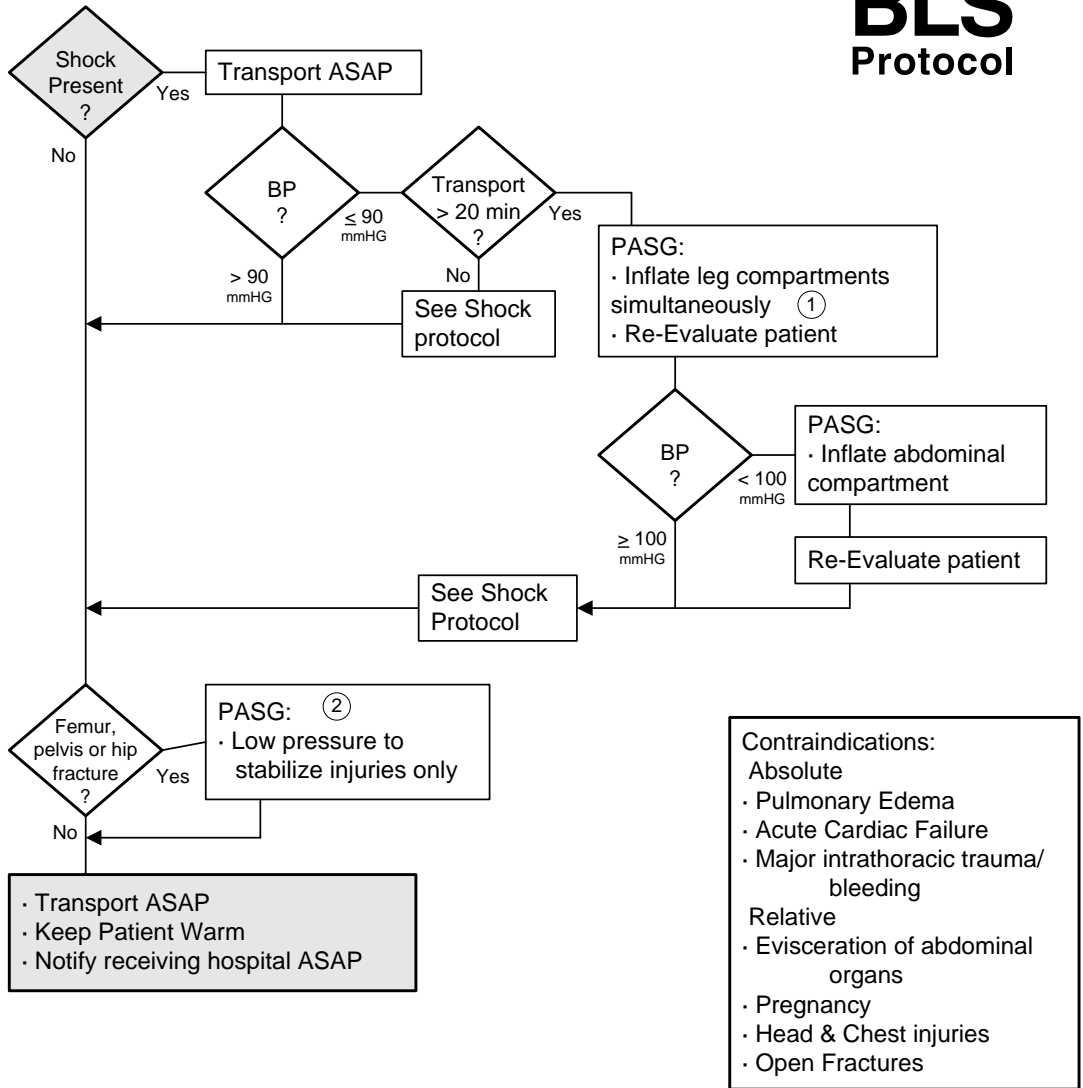


PASG Criteria
Pneumatic Anti-shock Garment

ALS BLS Protocol



Document:

- Indications
- Vital Signs, SpO2
- Exact time applied
- BP Before and After PASG
- Pressure Indicated on Gauges if Present

- 1 Inflate legs simultaneously until velcro straps start to slip, garment indents slightly or systolic BP reaches 100 mmHG.
- 2 Maintain the original PASG pressures if PASG have been inflated to treat the patient for shock.