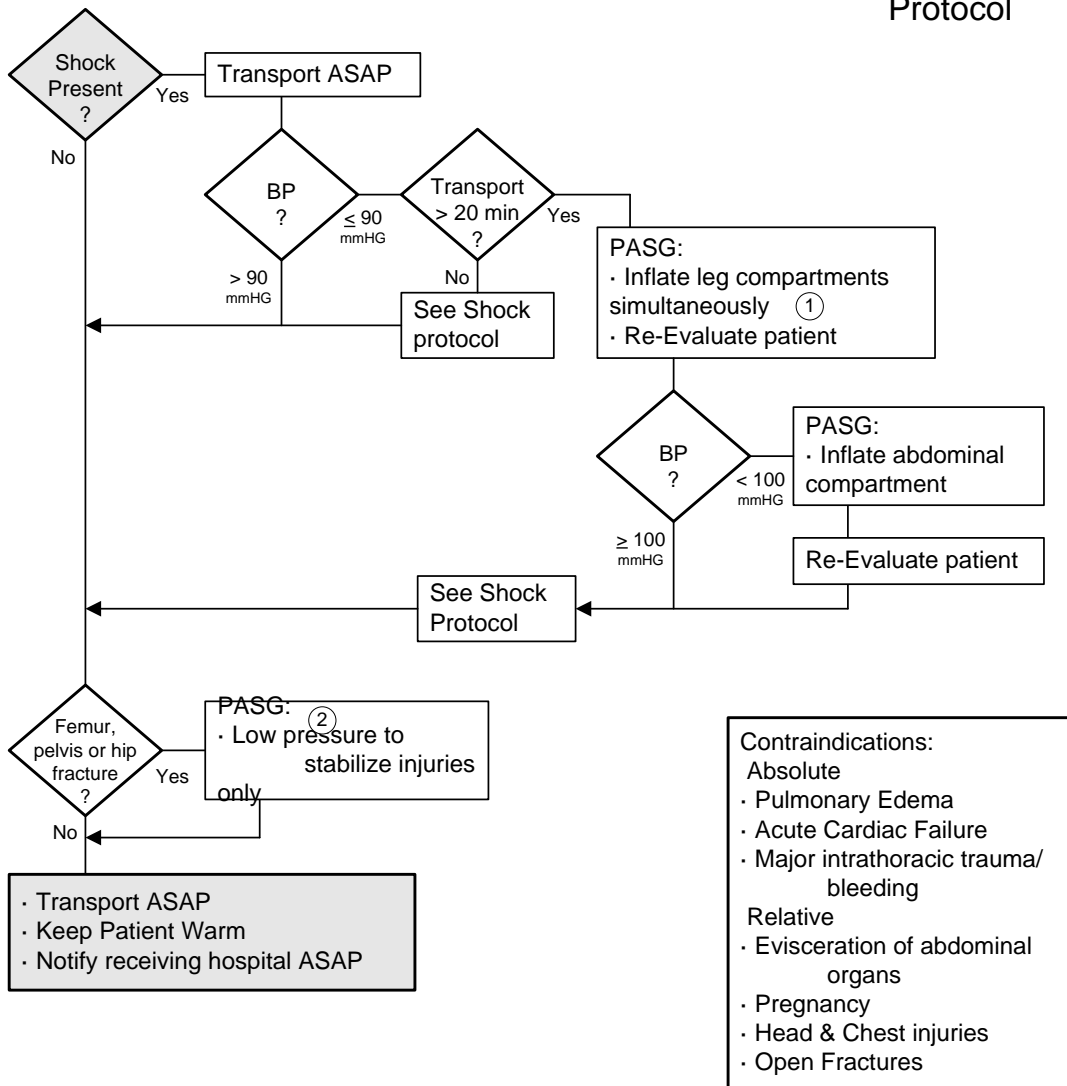


PASG Criteria
Pneumatic Anti-shock Garment

ILS
Protocol



- Contraindications:**
- Absolute**
- Pulmonary Edema
 - Acute Cardiac Failure
 - Major intrathoracic trauma/bleeding
- Relative**
- Evisceration of abdominal organs
 - Pregnancy
 - Head & Chest injuries
 - Open Fractures

- Document:**
- Indications
 - Vital Signs, SpO2
 - Exact time applied
 - BP Before and After PASG
 - Pressure Indicated on Gauges if Present

1 Inflate legs simultaneously until velcro straps start to slip, garment indents slightly or systolic BP reaches 100 mmHG.
2 Maintain the original PASG pressures if PASG have been inflated to treat the patient for shock.