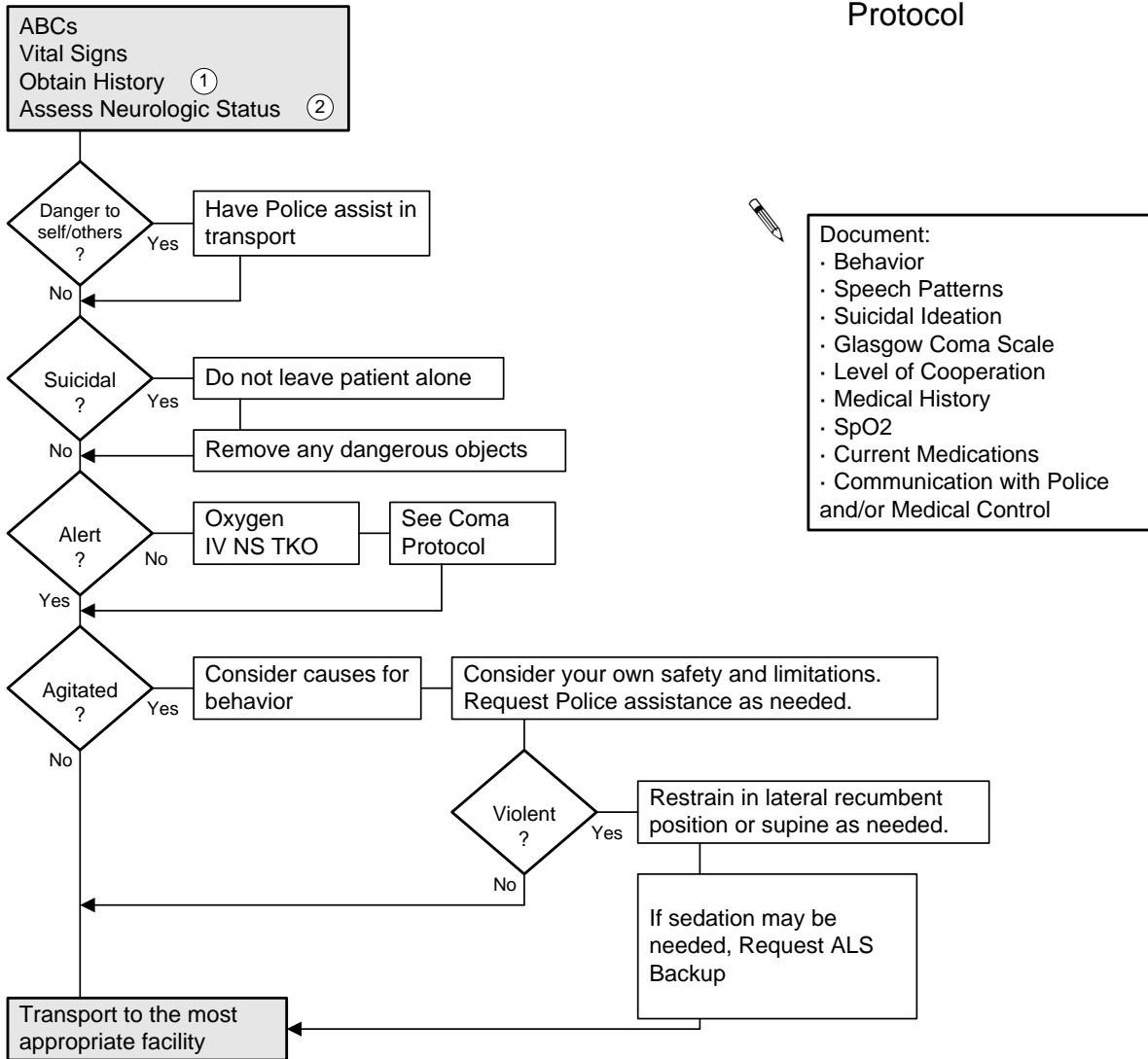


Psychiatric & Behavioral Disorders

ILS Protocol



1 Note: Bizarre behavior, abrupt change in behavior, suicidal ideation, possible drug or alcohol ingestion, history of diabetes, etc. Look for Medic Alert tag.
 2 Consider possibility of hypoglycemia. A low blood sugar can cause agitation, confusion, irritability.