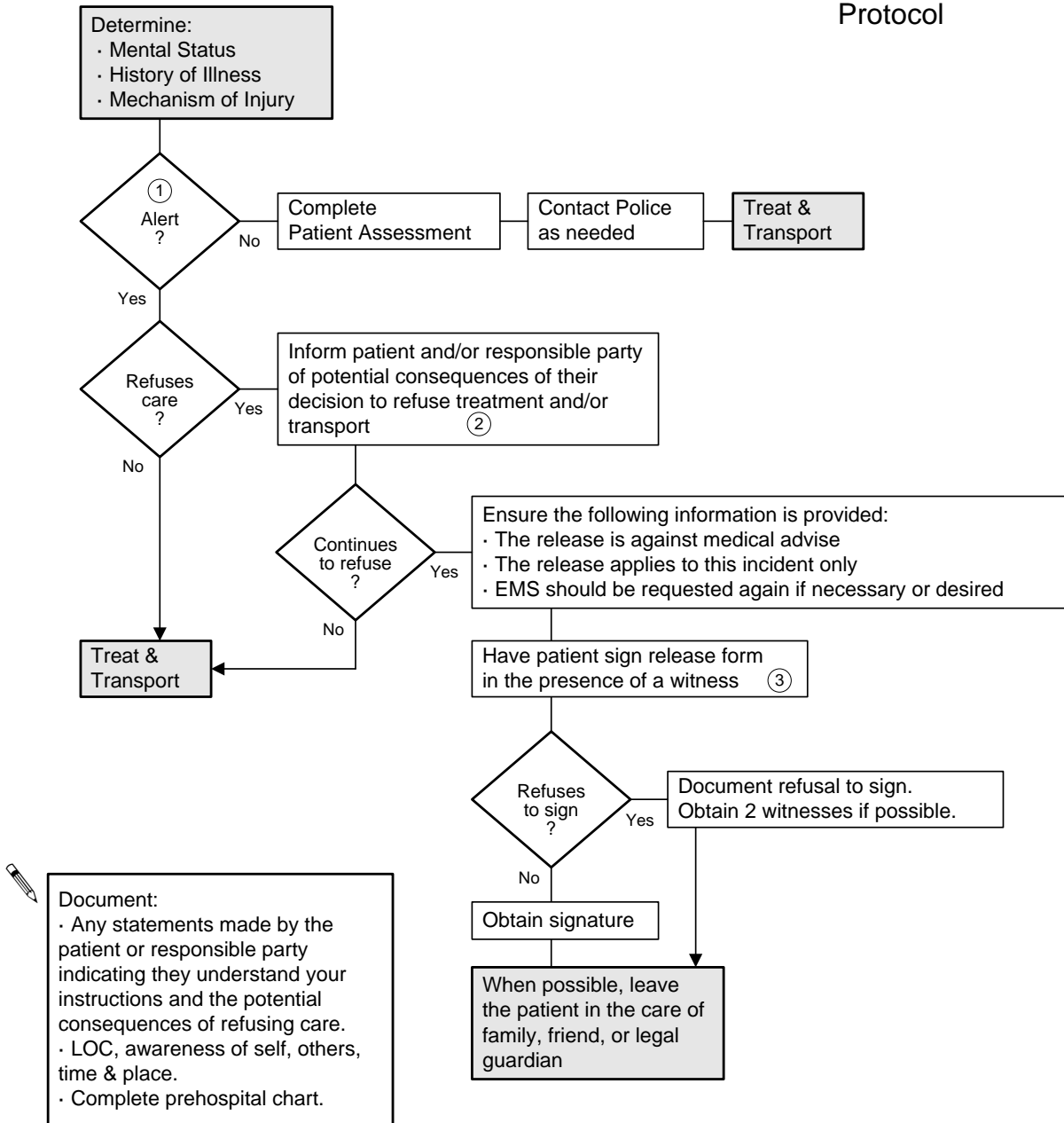


Refusal of Care

ILS Protocol



NOTE: This protocol assumes it is medically indicated to treat or transport this patient.

1 "Alert" implies the patient is conscious, oriented to person, place, and time. Glasgow Coma Scale = 15.

2 Ensure patient understands these consequences.

3 Witness should be someone other than EMS personnel, if possible, and must sign the release.

ECEMS, Effective 1/2008

Copyright 2001-2011 East Cascade Emergency Medical Services

REFUSAL OF CARE