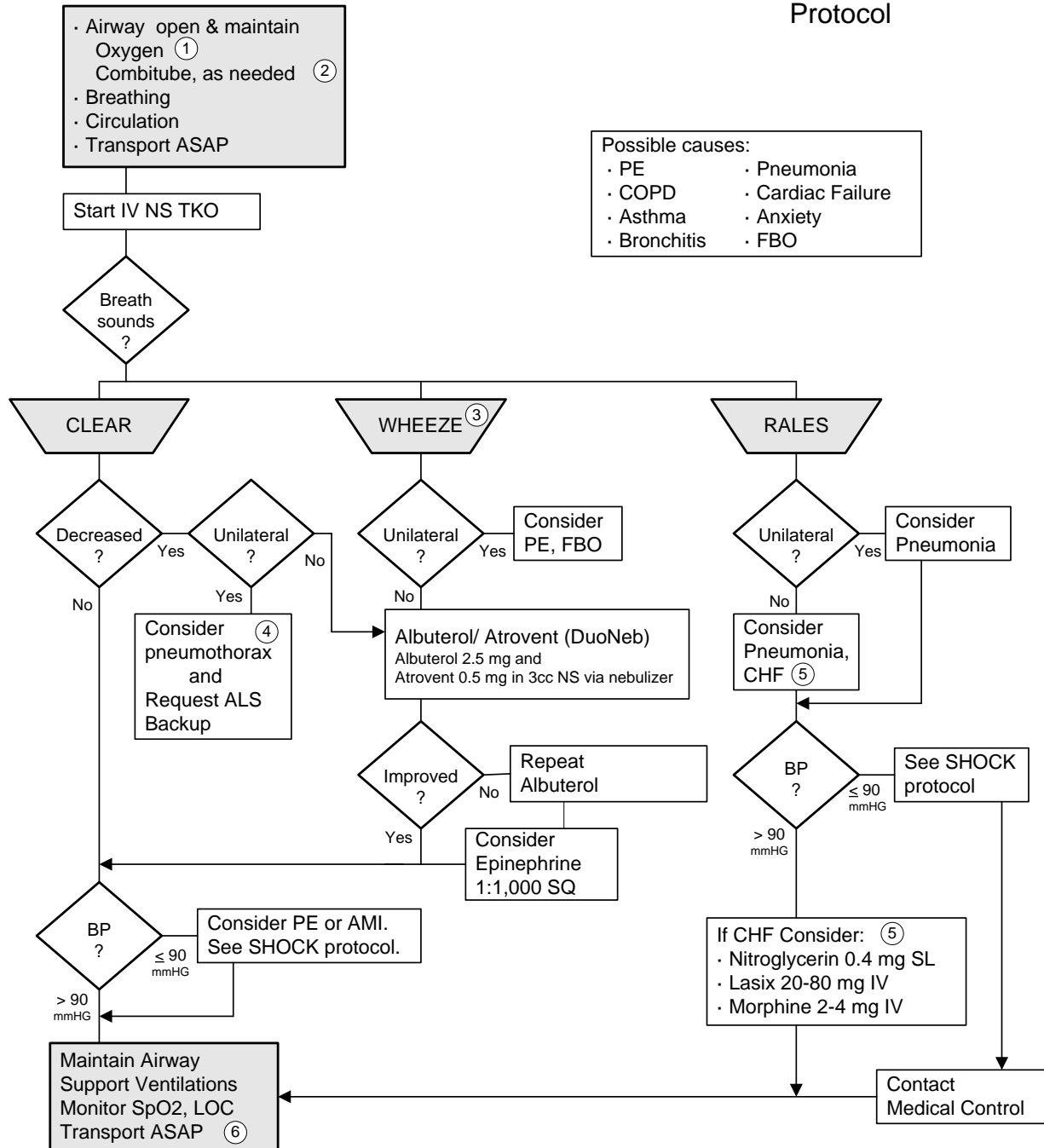


# Respiratory Distress

# ILS Protocol



- Possible causes:
- PE
  - COPD
  - Asthma
  - Bronchitis
  - Pneumonia
  - Cardiac Failure
  - Anxiety
  - FBO

1 COPD patients often use their hypoxic drive. In these cases expect & accept SpO2 readings < 90 and > 85%.  
 2 See Combitube Protocol.  
 3 Wheeze may be caused by: CHF, PE, ASTHMA, aspiration.  
 4 ALS May be needed for: Tension Pneumothorax. .  
 5 See Congestive Heart Failure/Pulmonary Edema Protocol.  
 6 Transport ASAP. Do not delay transport at any time in this protocol.