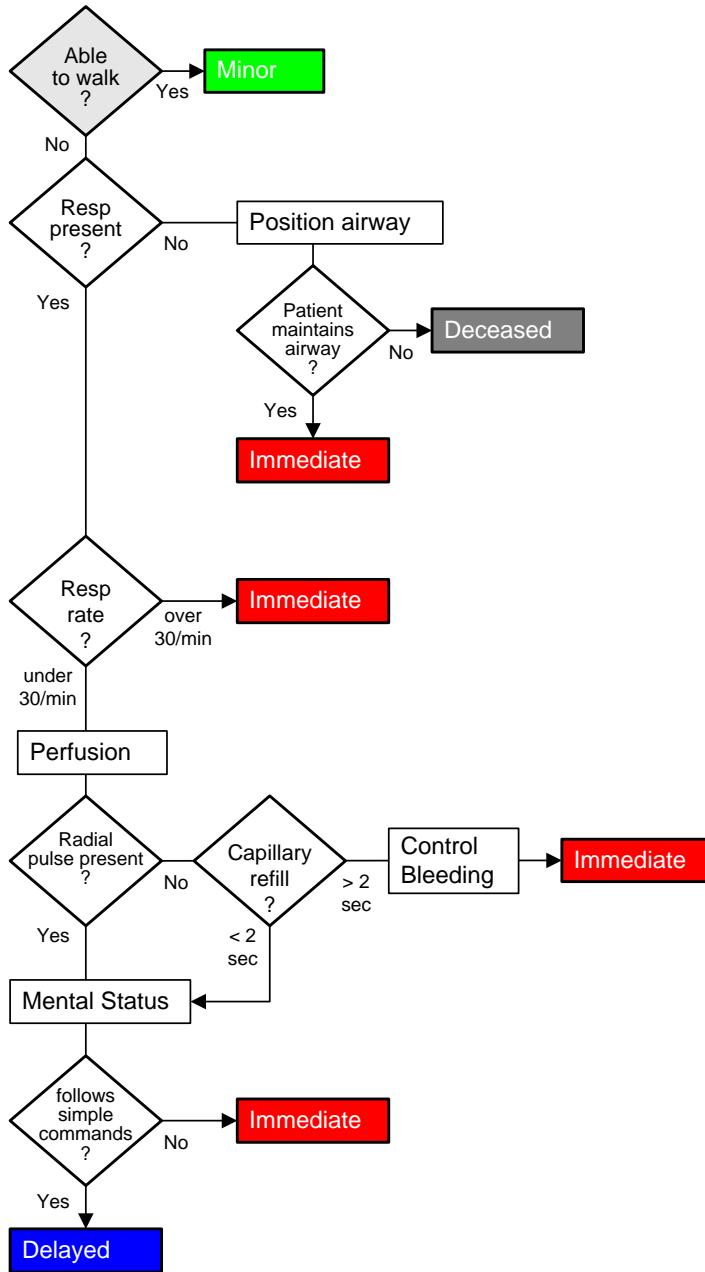


START Triage

ALS BLS Protocol



The clinician should view this protocol as an adjunct to your systems disaster plan ONLY if START Triage is a part of that plan. This protocol does not constitute or attempt to substitute for a disaster plan and should only be used in conjunction with a system-wide response, approved in your area.

Adapted from START Triage, originally developed by:
Hoag Memorial Hospital Presbyterian and
Newport Beach Fire Department

ECEMS, Effective 1/2008