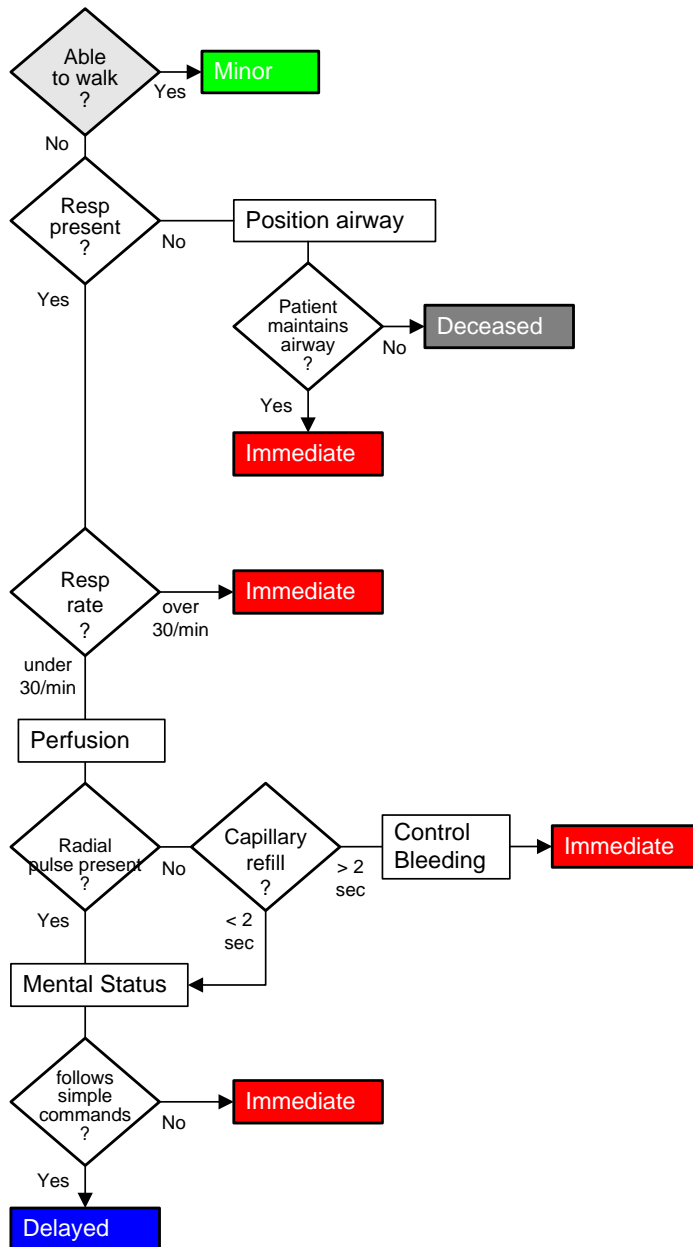


START Triage



The clinician should view this protocol as an adjunct to your systems disaster plan ONLY if START Triage is a part of that plan. This protocol does not constitute or attempt to substitute for a disaster plan and should only be used in conjunction with a system-wide response, approved in your area.

Adapted from START Triage, originally developed by:
Hoag Memorial Hospital Presbyterian and
Newport Beach Fire Department
ECEMS, Effective 1/2008
Copyright 2001-2011 East Cascade Emergency Medical Services