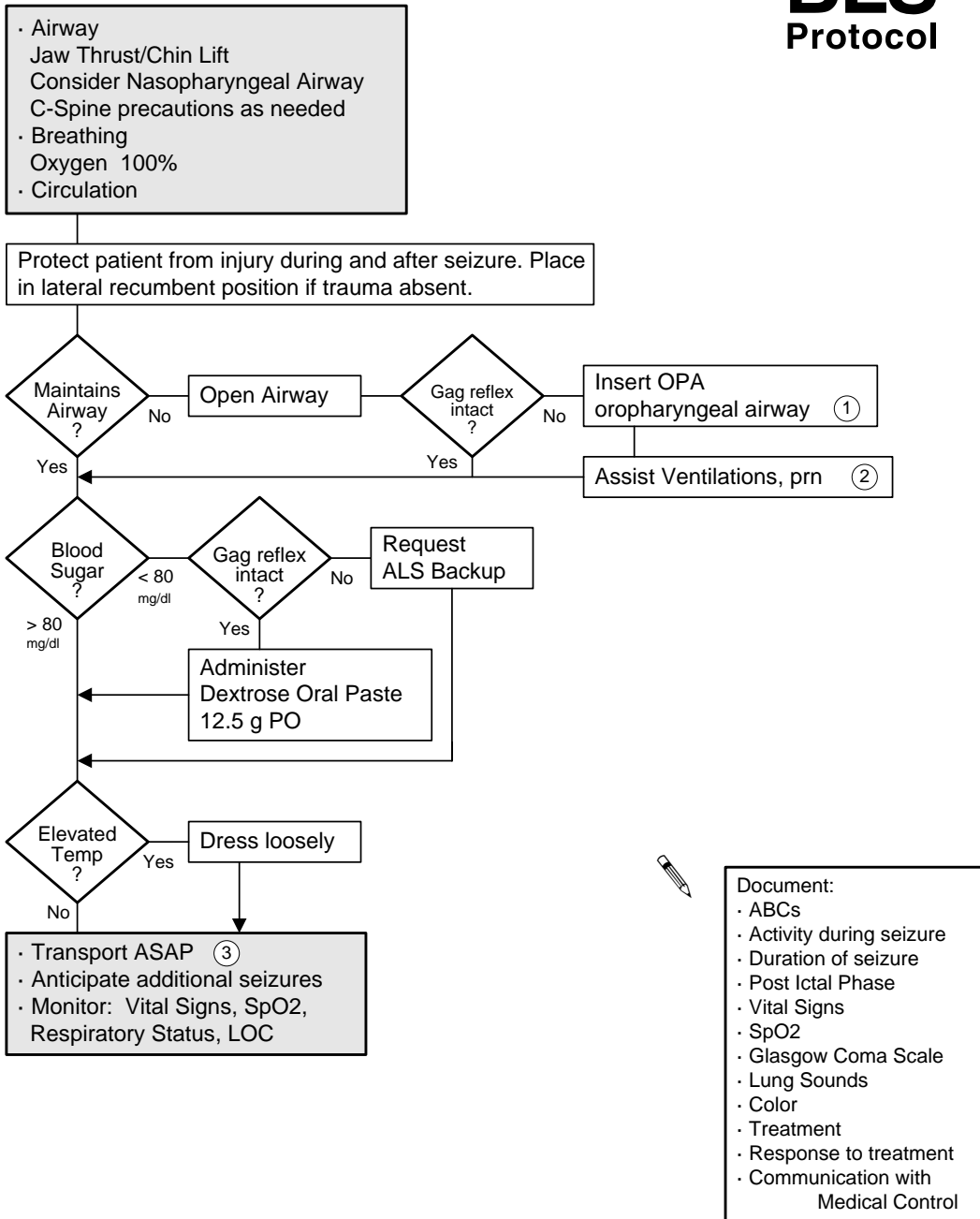


Seizure

BLS Protocol



1 Do NOT attempt to insert an OPA (oropharyngeal airway) during a seizure. NOTE: most post-ictal patients do not need an OPA. If an OPA is used, be prepared to remove OPA as consciousness returns. Consider a nasopharyngeal (trumpet) airway.
 2 Ventilatory assistance may be required yet most post-ictal patients do NOT need assistance.
 3 Provide a quiet, calm environment.