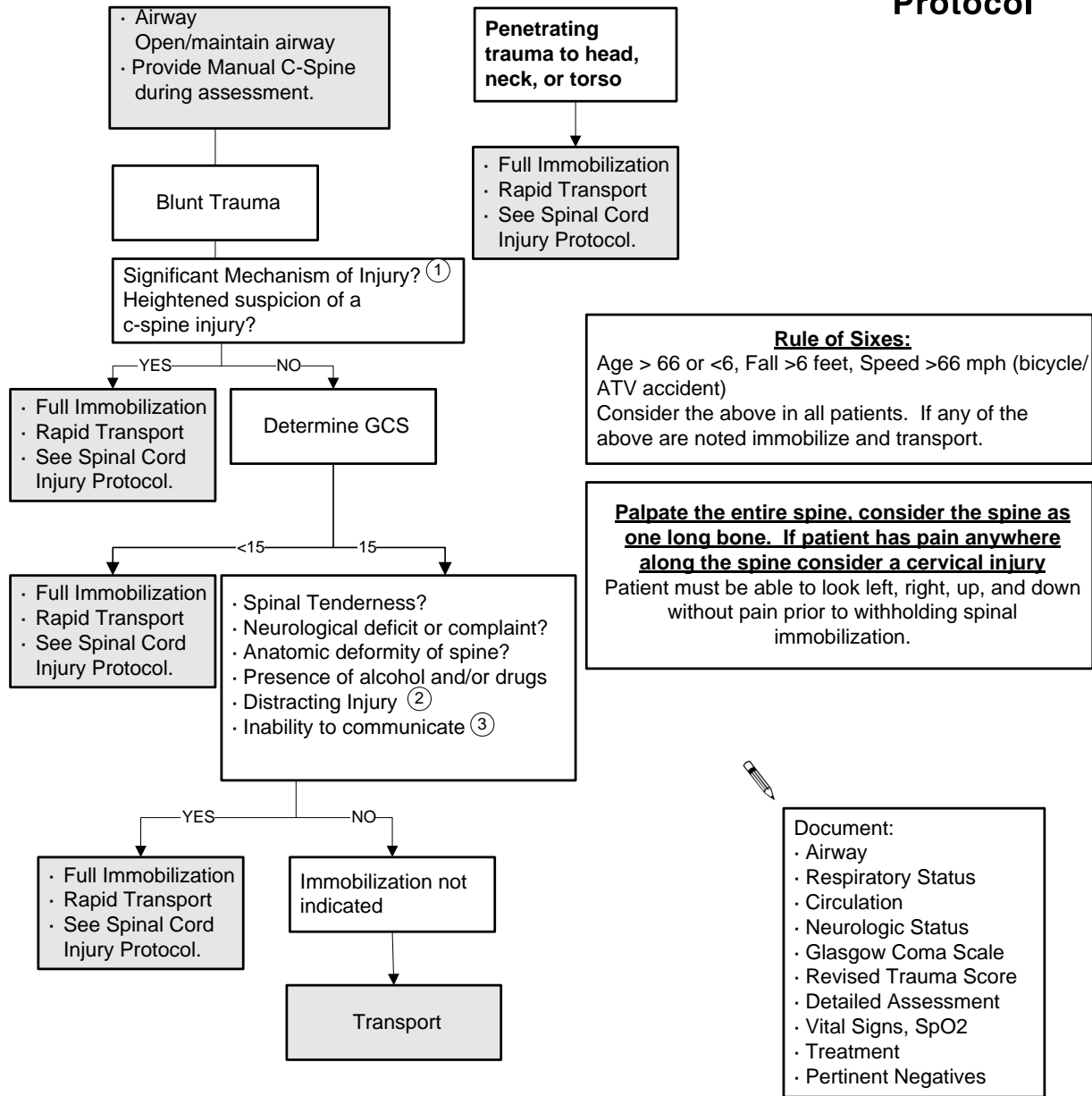


ALS Protocol

Selective Spinal Immobilization



1. Concerning Mechanism of Injury—Any mechanism that produced a violent impact to the head, neck, torso, or pelvis. Incidents producing sudden acceleration and/or deceleration, or lateral bending forces to the neck or torso. Any fall especially in elderly persons. Ejection from a motorized vehicle including motorcycles, scooters, etc.. Victim of shallow water diving accident.

2. Distracting Injury—Any injury that may have the potential to impair the patients ability to appreciate other injuries. Examples include 1) Long bone injury 2)a visceral injury requiring surgical consultation; 3) a large laceration, degloving injury, or crush injury; 4) large burns, or 5) any other injury producing acute functional impairment.

3. Inability to Communicate—Any patient who, for reasons not specified above, cannot clearly communicate so as to actively participate in their assessment. Examples: speech or hearing impaired, those who only speak a foreign language, and small children.

