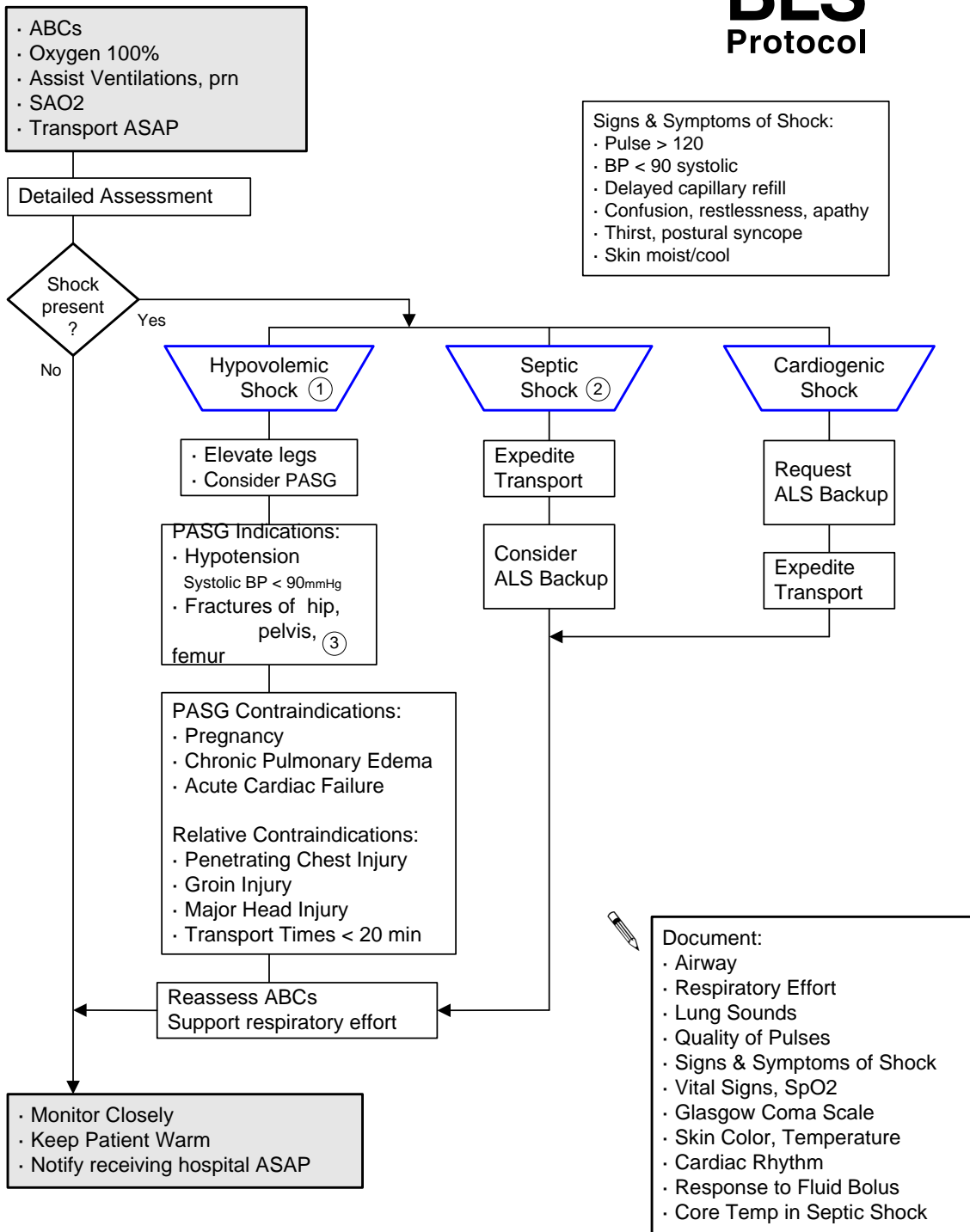


Shock

BLS Protocol



Signs & Symptoms of Shock:
• Pulse > 120
• BP < 90 systolic
• Delayed capillary refill
• Confusion, restlessness, apathy
• Thirst, postural syncope
• Skin moist/cool

1 See trauma protocols if appropriate. Control external bleeding.
2 Septic shock in a child is a medical emergency. Expedite transport!
3 Inflate PASG with light to moderate pressure to STABILIZE the fractures noted above. See PASG Criteria Protocol.