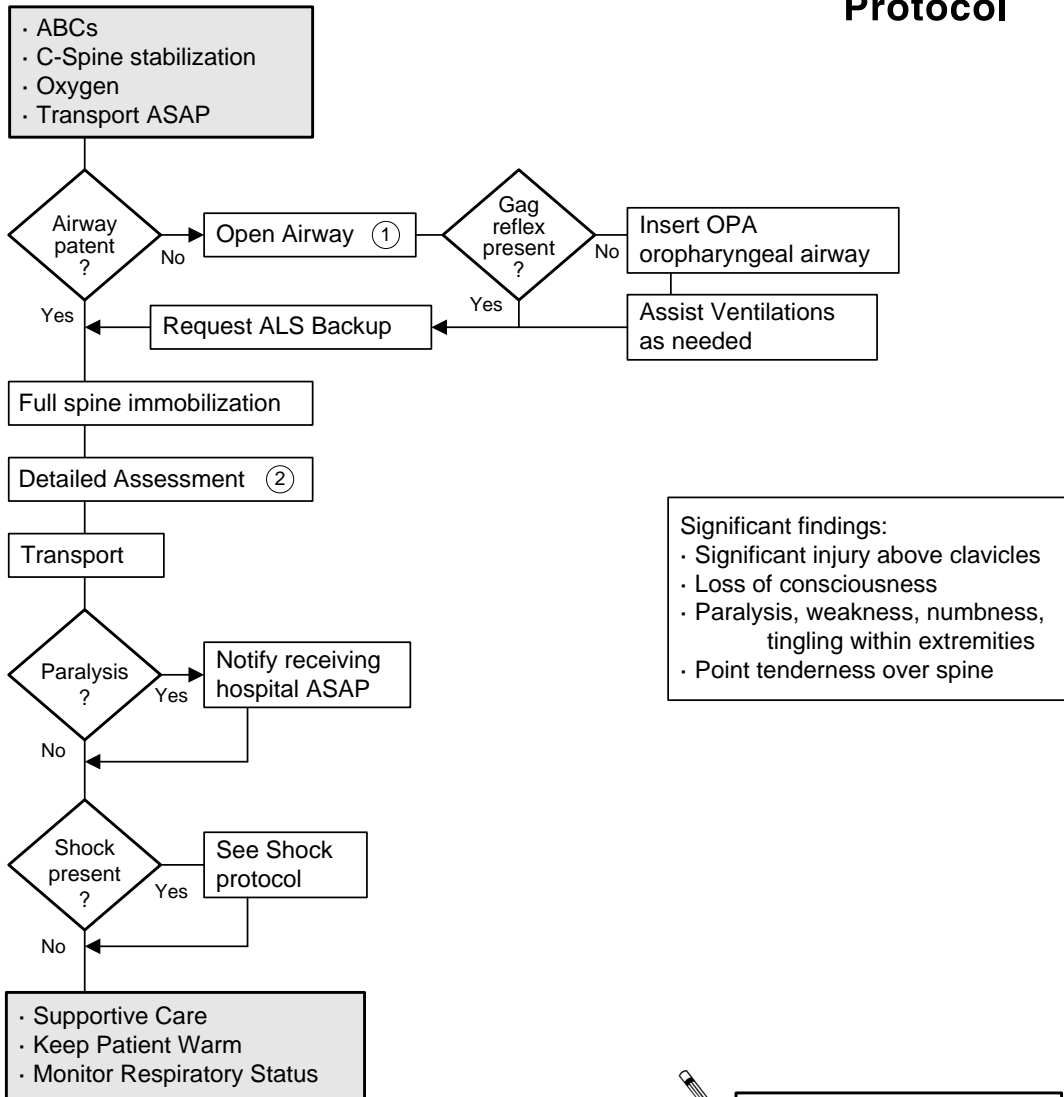



# Spinal Cord Injury Suspected

# BLS Protocol



Significant findings:

- Significant injury above clavicles
- Loss of consciousness
- Paralysis, weakness, numbness, tingling within extremities
- Point tenderness over spine

 Document:

- Airway
- Glasgow Coma Scale
- Vital Signs, SpO2
- Evidence of Paralysis or Paresthesia
- Loss of Consciousness
- Mechanism of Injury
- Presence or Lack of Tenderness Over Spine
- Treatment

1 Maintain STRICT spinal immobilization.  
 2 Secondary Survey to include frequent neurological checks, CMS (circulation, motor, sensation). Determine level of injury-dermatome involved.