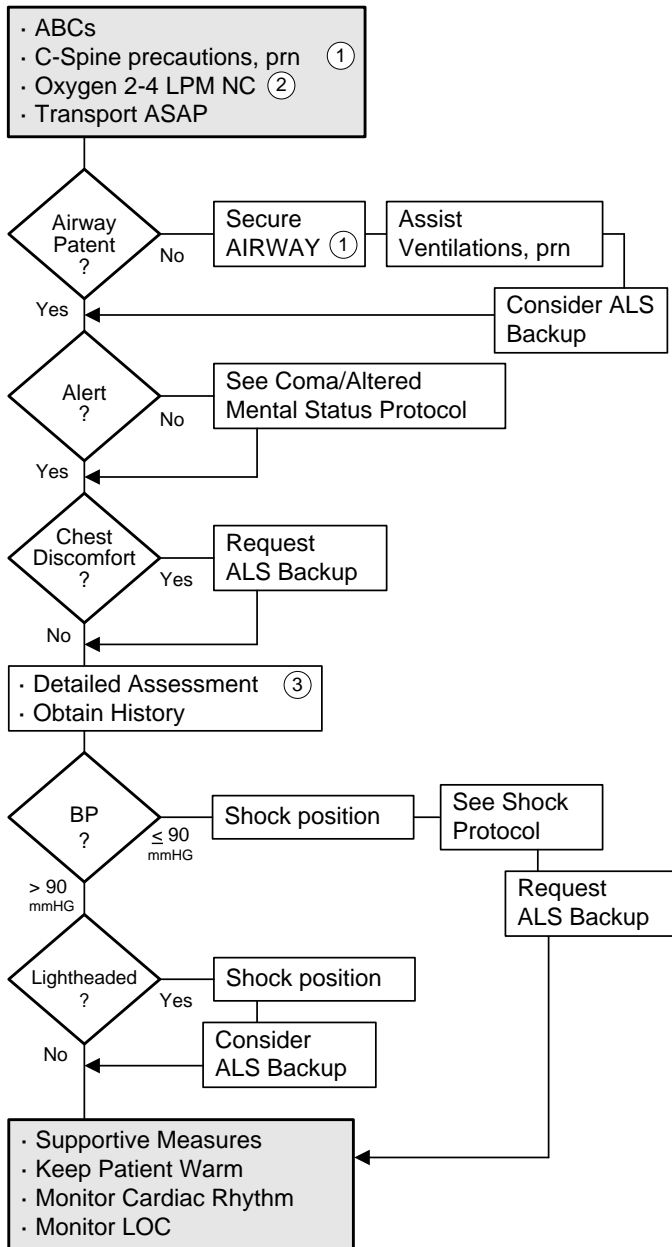


Syncope

BLS Protocol



- Possible causes:
- Medications
 - Vasovagal response
 - Hypovolemia
 - Vasodilatation
 - Dysrhythmias
 - Fatigue
 - Heart Disease
 - Heat Stroke

- Document:
- Medications
 - Onset & Duration of LOC
 - Activity Prior to LOC
 - Recent or Chronic Illness
 - Trauma
 - Seizure Activity
 - SpO2, GCS, Vital Signs
 - Capillary Refill
 - Lung Sounds

1 Establish spinal immobilization if associated with fall or trauma.
 2 Higher concentration of oxygen may be indicated. Consider hypoxic drive in COPD.
 3 Monitor SpO2, Cardiac Rhythm, Capillary Refill, Glasgow Coma Scale.