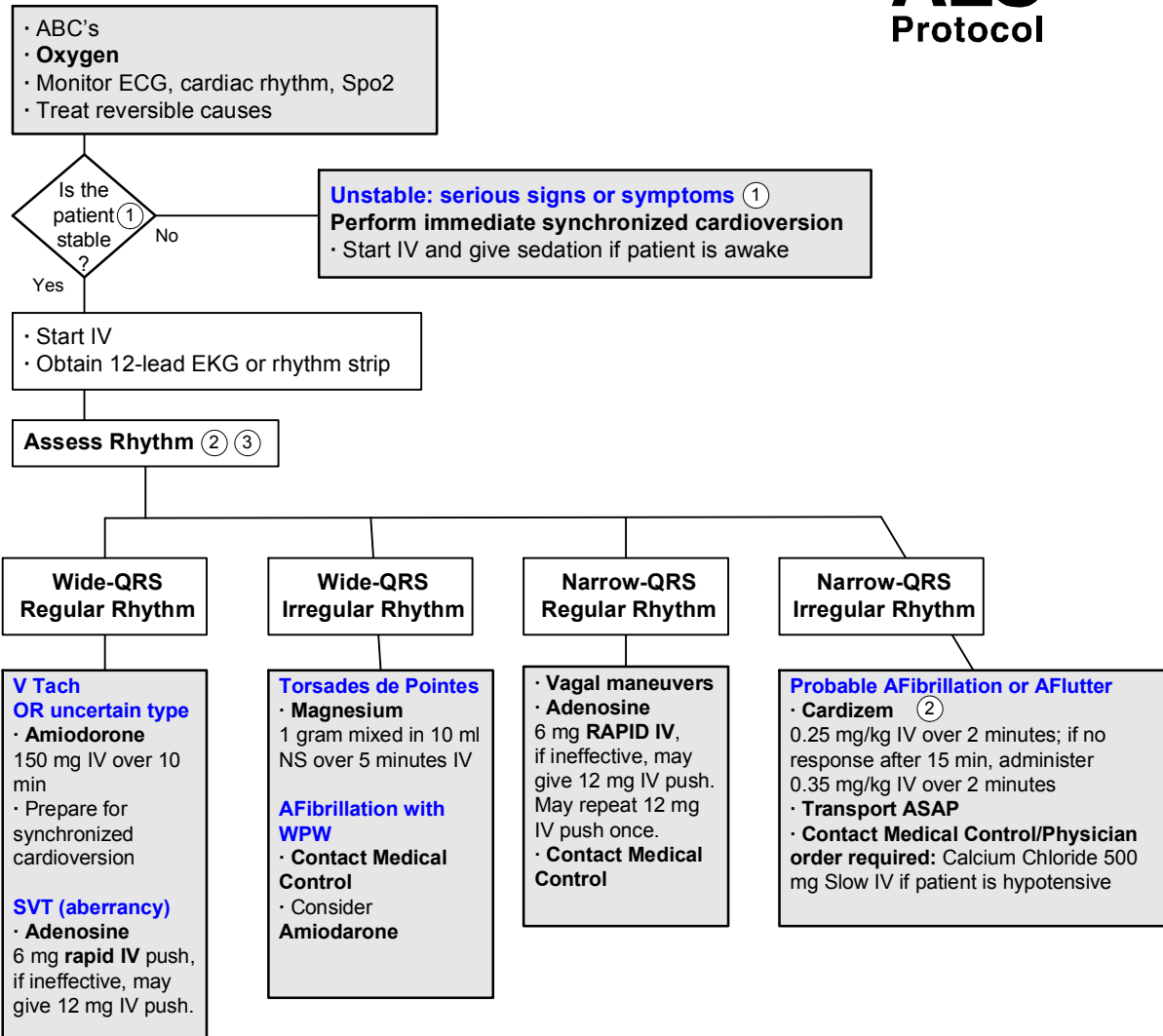


# Tachycardia with Pulses

# ALS Protocol



1 Serious signs and symptoms include: altered mental status, chest pain, hypotension.

NOTE: rate-related symptoms uncommon if heart rate < 150 bpm.

2 Contact Medical Control if you have any questions or need expert advise. If patient becomes unstable at any time perform immediate synchronized cardioversion.

3 Wide-QRS = > 0.12 seconds. Narrow-QRS = < 0.12 seconds.