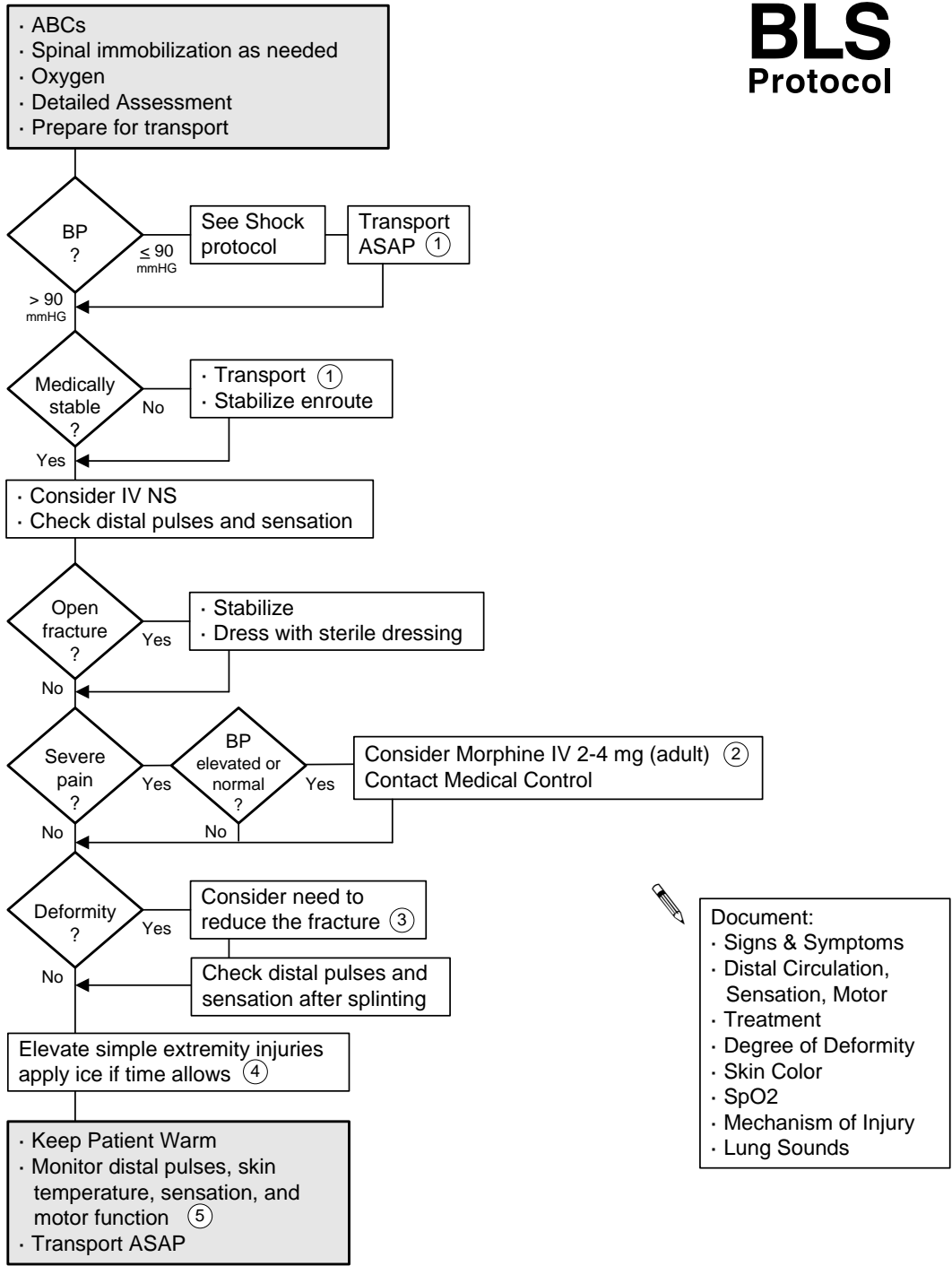


Trauma: Orthopedic

ALS BLS Protocol



1 If you are BLS, request ALS Backup.
 2 Morphine is an ALS drug.
 3 Immobilize the joint above & below the injury. IF indicated, realign fractures by applying gentle axial traction to: a. restore distal circulation, b. immobilize adequately, i.e. realign femur fracture.
 4 Dislocations: Contact Medical Control if circulation is compromised.
 5 SpO2 monitoring may help you confirm circulation in an extremity.