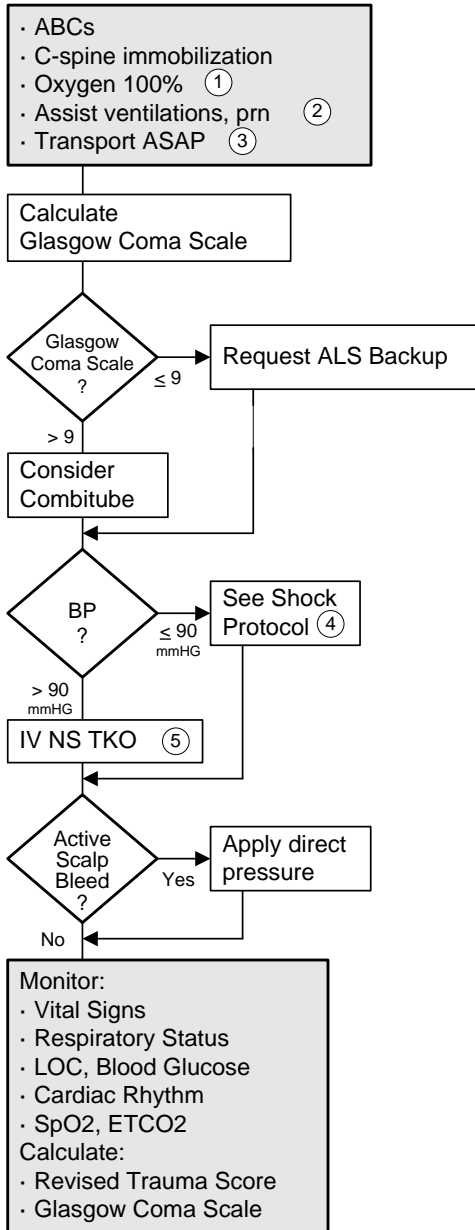



Trauma: Head Injury

ILS Protocol



Glasgow Coma Scale		
Eye	Spontaneous	4
	To Voice	3
	To Pain	2
Best Verbal Response	None	1
	Oriented	5
	Confused	4
Best Motor Response	Inappropriate words	3
	Incomprehensible words	2
	None	1
Best Motor Response	Obeys Commands	6
	Localizes Pain	5
	Withdraws (Pain)	4
Best Motor Response	Flexion	3
	Extension	2
	None	1

-  Document:
- ABCs
 - Signs & Symptoms
 - Glasgow Coma Scale
 - Revised Trauma Score
 - SpO2, ETCO2, VS
 - Cardiac Rhythm
 - Motor/Sensation
 - Lung Sounds
 - Respiratory Effort
 - Skin Color
 - Mechanism of Injury
 - Onset & Duration of LOC

1 Oxygen 100% per non-rebreathable mask or bag-valve-device as needed.
 2 Aggressive ventilatory support may be needed. If the patient's ventilations are not effective secure the patient's airway and assist ventilations.
 3 Every head-injured patient who has had a period of unconsciousness must be evaluated at a hospital.
 4 Treat hypotension. Head injury may cause shock in infants.
 5 Start 2 large-bore IVs.