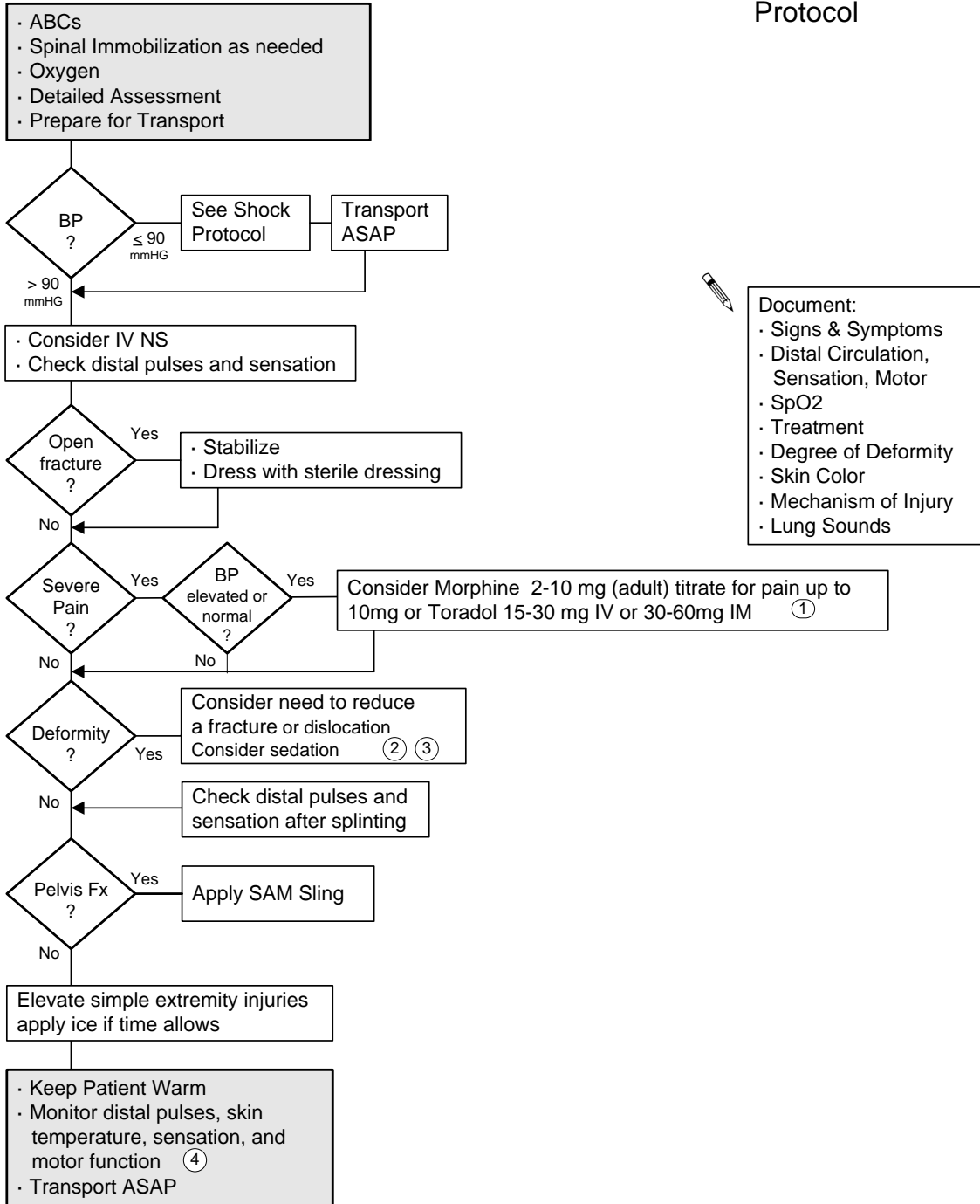


# Trauma: Orthopedic

# ILS Protocol



**Document:**

- Signs & Symptoms
- Distal Circulation, Sensation, Motor
- SpO2
- Treatment
- Degree of Deformity
- Skin Color
- Mechanism of Injury
- Lung Sounds

1 Toradol: Use CAUTION with fractures due to risk of bleeding. Morphine may be a better drug of choice.  
 2 Immobilize the joint above & below the injury. IF indicated, realign fractures by applying gentle axial traction: a. To restore circulation distally, b. To immobilize adequately, i.e. realign femur fracture.  
 3 Dislocations: Contact Medical Control if circulation is compromised.  
 4 SpO2 monitoring may help you confirm circulation within an extremity.